

ASAM Technical Assistance Series

Comparing Levels 1, 2.1, 2.5, & OTP Services

Reminders

- Questions should be submitted 7 days in advance of the call to RA-DAASAM@pa.gov. Please feel free to submit questions in the chat.
- This call is being recorded. Please exit now if you do not want to be recorded. You will be able to review the video in its entirety on the DDAP webpage following this event.
- Suggestions for future call topics should be submitted to RA-DAASAM@pa.gov.
- The monthly TA calls should be used in conjunction with the ASAM text and are not a substitute for the ASAM Criteria 2013, 3rd Edition.

Disclaimers

Alignment with The ASAM Criteria is required of drug and alcohol treatment providers that receive funding for providing treatment services under agreements with Single County Authorities and/or Managed Care Organizations.

DDAP stresses the importance of reviewing the ASAM Criteria text in its entirety, attending the ASAM two-day training, and reviewing the resources available through DDAP including trainings and documents.

Today's Presenters

Gloria Gallagher, BSW, CRS; Quality Improvement Section Chief

Amanda Madison, BA, CADC; D&A Program Representative

Brandi Simone, MSW, LSW, CADC; D&A Program Representative

Learning Objectives

- Understand the different levels of outpatient services for Adults
- Distinguish the Dimensional Drivers for each outpatient level of care
- Knowledge of the Service Characteristics for each Outpatient level
- Overview of Opioid Treatment Services

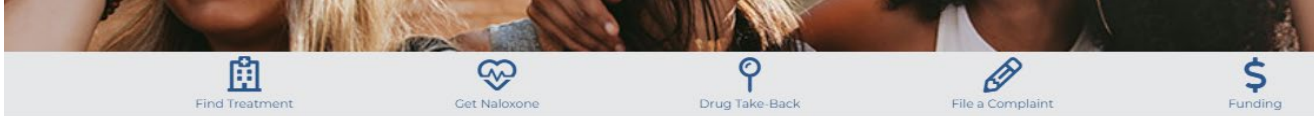
DDAP's ASAM Transition Page

www.ddap.pa.gov

[ASAM Transition \(pa.gov\)](http://www.ddap.pa.gov/ASAM-Transition)

The screenshot shows a web browser window with the URL www.ddap.pa.gov/pages/default.aspx#. The navigation menu includes links for Contact Us, About DDAP, Get Help Now, For Professionals, and Training. The 'For Professionals' link is highlighted with an orange circle, and its dropdown menu is open, showing the following options: For Professionals, ASAM Transition, D&A Treatment Providers, Gambling Treatment Providers, Licensing, Prescribers, Procurement, and Single County Authorities. The 'ASAM Transition' option is also highlighted with an orange circle. The background of the website features a person holding a smartphone, with the text '2-HELP (4357)' and 'hol treatment' visible.

DDAP's ASAM Transition Page



[Department of Drug and Alcohol Programs](#) > [For Professionals](#) > ASAM Transition

ASAM Transition

Important Note* We have updated the ASAM portion of our website. The [ASAM Transition Website Changes](#) document describes the changes made during this process.

[Guidance for the Application of ASAM for Adults - 2/22](#)
[Behavioral HealthChoices Provider ASAM Rates](#)
[Guidance for the Application of ASAM WM in PA SUD Tx System *New*](#)

Aligned Facilities

[ASAM Level 2.5 \(Partial Hospitalization Services\) Aligned Facilities](#)
[ASAM Level 3.7 \(Medically Monitored Intensive Inpatient\) Aligned Facilities](#)

ASAM Service Alignment

[Expand All](#)

Level 1.0 Outpatient
View documents ▾
Level 2.0 Intensive Outpatient
View documents ▾
Level 3.0 Residential/Inpatient Services
View documents ▾
Level 4.0 Medically Managed Intensive

Questions about the ASAM Transition?

Email PA_DAASAM@pa.gov

The [ASAM archive page](#) contains all previously available ASAM documentation and guidance.

Trainings

- [ASAM In-Person Training Website](#) [↗](#)
- [ASAM Criteria New Training Announcement 2022](#)
- [DDAP ASAM-Related Trainings](#)

Effective February 1, 2022, DDAP expanded its approved curriculum to include an additional online training through The American Society of Addiction Medicine, increasing the number of approved online ASAM trainings to two options. [Learn more](#).

Monthly ASAM Technical Assistance Series

[ASAM Monthly Technical Assistance Series](#)

October 2021: ASAM Update by DDAP and DHS
[View Slides](#) | [View Recording](#) [↗](#) | [Q&A](#)

November 2021: MAT Across the Continuum of Care
[View Slides](#) | [View Recording](#) [↗](#) | [Q&A](#)

December 2021: Individualized Documentation Considerations
[View Slides](#) | [View Recording](#) [↗](#) | [Q&A](#)

January 2022: Therapies
[View Slides](#) | [View Recording](#) [↗](#) | [Q&A](#)

February 2022: Co-Occurring Capability
[View Slides](#) | [View Recording](#) [↗](#) | [Q&A](#)

March 2022: Special Populations
[View Slides](#) | [View Recording](#) [↗](#) | [Q&A](#)

April 2022: ASAM Myths and Facts
[View Slides](#) | [View Recording](#) [↗](#)

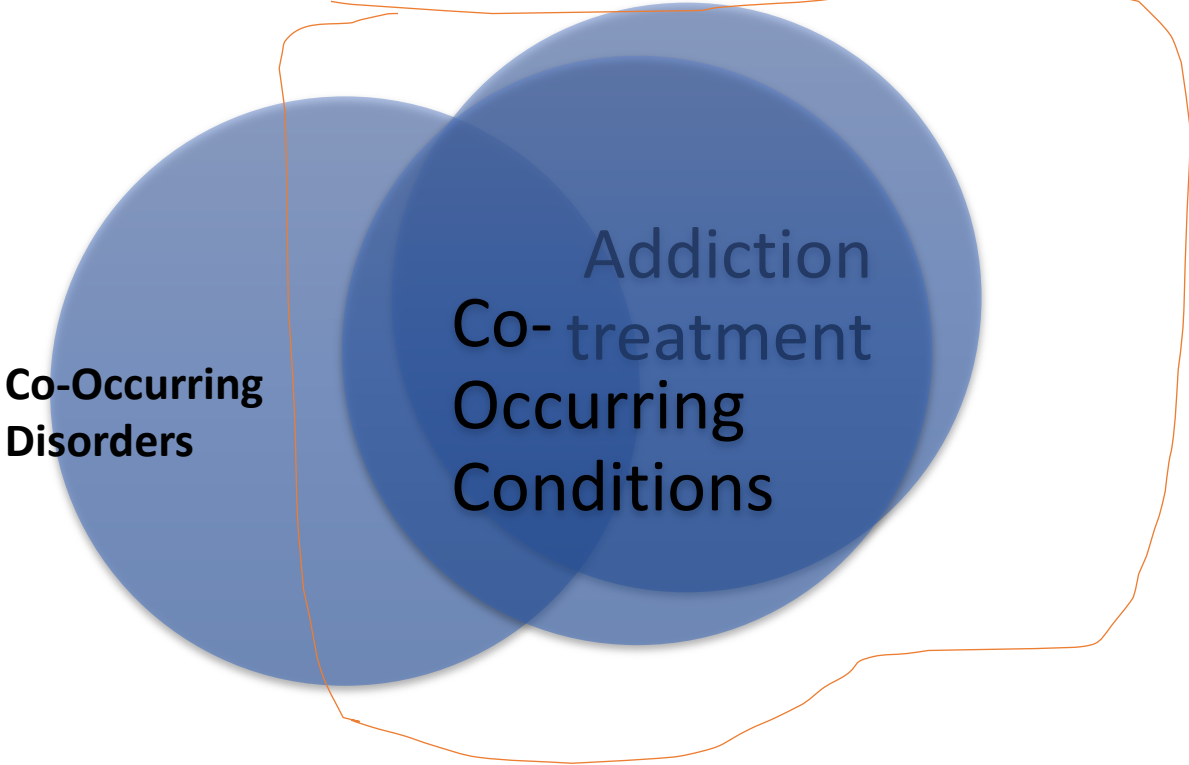
May 2022: Support System
[View Slides](#) | [View Recording](#) [↗](#)

June 2022: Staffing
[View Slides](#) | [View Recording](#) [↗](#)

July 2022: ASAM Alignment Document Review
[View Slides](#) | [View Recording](#) [↗](#)

August 2022: ASAM Alignment Review Provider Perspective & Record Review
[View Slides](#) | [View Recording](#) [↗](#)

Recovery-Oriented Co-occurring Capable



Co-occurring capable programs cover everything in the orange circle



Outpatient Levels of Care

1

- Outpatient Services
- Less than 9 hours (adults); less than 6 hours (adolescents)

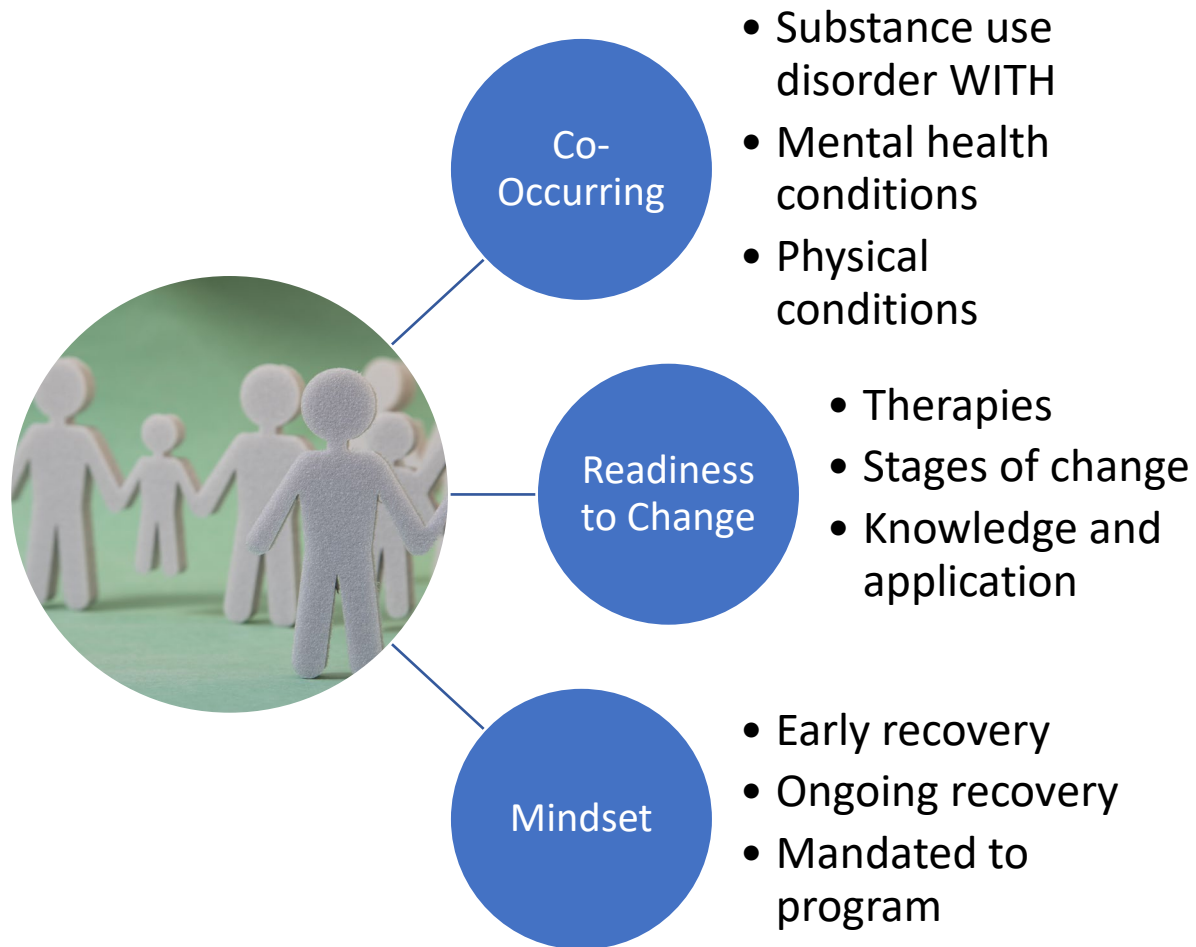
2.1

- Intensive Outpatient
- 9-19 hours

2.5

- Partial Hospitalization
- 20 or more hours of services

Level 1: Promoting Greater Access to Care



Level 1: Outpatient Service: Dimensions

1

- No signs or symptoms or withdrawal symptoms can be managed.

2

- Biomedical conditions are stable and permit engagement in services.

4

- Highlights that patients are willing to participate in services and create a treatment plan.
- Includes B., C. OR D.

Level 1: Outpatient Services: Dimensions

3

- All programs section AND
- Co-Occurring Enhanced Programs (in addition to All programs requirements above)

5

- All programs section AND
- Co-Occurring Programs (in addition to All programs requirements above)

6

- All programs section AND
- Co-Occurring Enhanced Programs (in addition to All programs requirements above)

Level 1: Outpatient Services: Dimensions

Services are appropriate for co-occurring substance and mental health disorders IF

Disorders are of moderate severity

Disorders are of high severity and chronic

Treatment will be beneficial

Moderate severity- Patient has responded to more intensive level of services, mental disorders are addressed to the extent addiction treatment can be incorporated

High severity and chronic- Patient is stabilized and can participate in dual mental and addiction treatment services with intensive case management

Staffing for Interventions

General mental health clinicians, general addiction clinicians, and professionals specifically trained to work with this population

Provided by Level 1 staff or by referral to a licensed professional

Level 1: Outpatient Therapies

Counseling
(Group/Individual)

Educational

Family

Addiction Pharmacotherapy

Occupational/
recreational

Co-occurring- Therapies that address medications;
including intensive case management, and assertive
community treatment

Level 2.1: Intensive Outpatient



Level 2.1: Intensive Outpatient



Direct admission to Level 2.1

- Specifications in Dimension 2 AND in Dimension 3, as well as at least ONE of dimensions 4,5, or 6



Transfer to Level 2.1 from a more intensive LOC

- Essential treatment objectives have been met at a more intensive level of care



Transfer to Level 2.1 from a less intensive LOC

- From a Level 1 program when services at Level 1 have proved insufficient to address the patient's needs

Level 2.5 - Partial Hospitalization

Service Delivery – Day treatment or partial hospitalization programs (in settings that meet PA licensure requirements)

Support Systems

Medical, psychological, psychiatric, lab, toxicology (all ***available through consultation or referral***) - Same as 2.1

Difference = Access to psychiatric and other medical consultation

Available within 8 hours by telephone and within 48 hours in person

Level 2.5 - Partial Hospitalization

Staff = Interdisciplinary staff = same as 2.1

Therapies = 20+ hours per week of *skilled treatment services*

- individual and group counseling
- medication management
- family therapy
- educational groups
- occupational and recreational therapy
- other therapies

Level 2.5 - Partial Hospitalization



Direct admission to Level 2.5

- Specifications in dimension 2 (if any biomedical conditions or problems exist) and in dimension 3 (if any emotional, behavioral, or cognitive conditions or problems exist) AND at least one in Dimensions 4, 5, or 6



Transfer to Level 2.5 from a more intensive LOC

- Has met essential treatment objectives at a more intensive level of care and requires the intensity of services provided at Level 2.5 in at least one dimension



Transfer to Level 2.5 from a less intensive LO

- Services provided at a less intensive level have proved insufficient to address the patient's needs, or when those services have consisted of motivational interventions to prepare them for a more intensive level of service, and they now meet admission criteria.

Dimensional Assessment

Assessment = Same as Level 1 and 2.1

Treatment Plan = Individualized, collaborative with the patient; reflects personal goals

Formal Dimensional Assessment = every 6 sessions

2.5 = Every Week

Dimensional Assessment

Dimensional Assessment = every 6 sessions

2.5 = Every Week

Direct Affiliations

- Memoranda of understanding
- Procedures
- Medication management
- System for information sharing and releases of information

Outpatient Opioid Treatment Services

Umbrella Term – 2 models

OTP/NTP (Narcotic Treatment Programs)

OBOT (Office Based Opioid Treatment)

Federal changes to the Data-Waiver

<https://www.dea/diversion.usdoj.gov/pubs/docs/A-23-0020-Dear-Registrant-Letter-Signed.pdf>

Outpatient Narcotic Treatment Programs

Setting:

Level 1 Outpatient Setting/Narcotic Treatment Program

Support Systems:

Access to emergency medical and psychiatric care (via affiliations)

Access to evaluation and ongoing primary medical care

Linkage with or access to psychological, medical, and psychiatric consultation

Staff:

Interdisciplinary team

Outpatient Narcotic Treatment Programs

Integrated care

Concurrent over sequential, where possible

Address co-occurring conditions, disorders, and illnesses

Collaboration across different settings and levels of care

Outpatient Narcotic Treatment Programs

Therapies

Individualized patient-centered assessment and treatment

Range of cognitive, behavioral, and other therapies

Case Management

Psychoeducation

Medication for other physical and mental health disorders

Monitored drug testing

Assessment/Treatment Plan Review

Medical history

Physical exam

Individualized, patient-centered and recovery focused treatment plan

Outpatient Narcotic Treatment Programs

Admission Criteria/Dimensional Drivers
Pp 296-298 of the ASAM (3rd ed)

Office-based Opioid Treatment (OBOT) Services

Settings

- Primary care offices
- Centers of Excellence
- Outreach
- Licensed D&A Programs

Psychosocial components

- Highly structured environment
- Patient-centered addiction counseling
- Mental health therapy
- Referral relationships

Refer to DDAP's Licensing Alert for detailed information about MOUD licensing designations

[Alert 2021-01.pdf \(pa.gov\)](#)

Reminder

Next TA Call = May 1, 2023

Topic = To be determined

RA-DAASAM@pa.gov